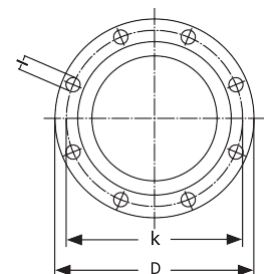


Flanschen-Tabelle

Bohrungen und Abmessungen nach DIN EN 1092

| Nennweite DN | PN 6 | | | | PN 10 | | | | PN 16 | | | |
|-----------------|----------------------------------|------------------------------------|-----------|----------------------------|----------------------------------|------------------------------------|-----------------|----------------------------|----------------------------------|------------------------------------|-----------------|----------------------------|
| | Flansch \varnothing mm D | Lochkreis \varnothing mm k | Schrauben | | Flansch \varnothing mm D | Lochkreis \varnothing mm k | Schrauben | | Flansch \varnothing mm D | Lochkreis \varnothing mm k | Schrauben | |
| | | | Anzahl | Loch \varnothing mm l | | | Anzahl | Loch \varnothing mm l | | | Anzahl | Loch \varnothing mm l |
| 20 | 90 | 65 | 4 | 11 | 105 | 75 | 4 | 14 | 105 | 75 | 4 | 14 |
| 25 | 100 | 75 | 4 | 11 | 115 | 85 | 4 | 14 | 115 | 85 | 4 | 14 |
| 32 | 120 | 90 | 4 | 14 | 140 | 100 | 4 | 18 | 140 | 100 | 4 | 18 |
| 40 | 130 | 100 | 4 | 14 | 150 | 110 | 4 | 18 | 150 | 110 | 4 | 18 |
| 50 | 140 | 110 | 4 | 14 | 165 | 125 | 4 | 18 | 165 | 125 | 4 | 18 |
| 65 | 160 | 130 | 4 | 14 | 185 | 145 | 4 | 18 | 185 | 145 | 4 ¹⁾ | 18 |
| 80 | 190 | 150 | 4 | 18 | 200 | 160 | 8 ²⁾ | 18 | 200 | 160 | 8 | 18 |
| 100 | 210 | 170 | 4 | 18 | 220 | 180 | 8 | 18 | 220 | 180 | 8 | 18 |
| 125 | 240 | 200 | 8 | 18 | 250 | 210 | 8 | 18 | 250 | 210 | 8 | 18 |
| 150 | 265 | 225 | 8 | 18 | 285 | 240 | 8 | 22 | 285 | 240 | 8 | 22 |
| 200 | 320 | 280 | 8 | 18 | 340 | 295 | 8 | 22 | 340 | 295 | 12 | 22 |
| 250 | 375 | 335 | 12 | 18 | 395 | 350 | 12 | 22 | 405 | 355 | 12 | 26 |
| 300 | 440 | 395 | 12 | 22 | 445 | 400 | 12 | 22 | 460 | 410 | 12 | 26 |
| 400 | 540 | 495 | 16 | 22 | 565 | 515 | 16 | 26 | 580 | 525 | 16 | 30 |
| 500 | 645 | 600 | 20 | 22 | 670 | 620 | 20 | 26 | 715 | 650 | 20 | 33 |

| Nennweite DN | PN 25 | | | | PN 40 | | | |
|-----------------|----------------------------------|------------------------------------|-----------|----------------------------|----------------------------------|------------------------------------|-----------|----------------------------|
| | Flansch \varnothing mm D | Lochkreis \varnothing mm k | Schrauben | | Flansch \varnothing mm D | Lochkreis \varnothing mm k | Schrauben | |
| | | | Anzahl | Loch \varnothing mm l | | | Anzahl | Loch \varnothing mm l |
| 20 | 105 | 75 | 4 | 14 | 105 | 75 | 4 | 14 |
| 25 | 115 | 85 | 4 | 14 | 115 | 85 | 4 | 14 |
| 32 | 140 | 100 | 4 | 18 | 140 | 100 | 4 | 18 |
| 40 | 150 | 110 | 4 | 18 | 150 | 110 | 4 | 18 |
| 50 | 165 | 125 | 4 | 18 | 165 | 125 | 4 | 18 |
| 65 | 185 | 145 | 8 | 18 | 185 | 145 | 8 | 18 |
| 80 | 200 | 160 | 8 | 18 | 200 | 160 | 8 | 18 |
| 100 | 235 | 190 | 8 | 22 | 235 | 190 | 8 | 22 |
| 125 | 270 | 220 | 8 | 26 | 270 | 220 | 8 | 26 |
| 150 | 300 | 250 | 8 | 26 | 300 | 250 | 8 | 26 |
| 200 | 360 | 310 | 12 | 26 | 375 | 320 | 12 | 30 |
| 250 | 425 | 370 | 12 | 30 | 450 | 385 | 12 | 33 |
| 300 | 485 | 430 | 16 | 30 | 515 | 450 | 16 | 33 |
| 400 | 620 | 550 | 16 | 36 | 660 | 585 | 16 | 39 |
| 500 | 730 | 660 | 20 | 36 | 755 | 670 | 20 | 42 |



¹⁾ MAG5100W und MAG8000 : 8-Loch

²⁾ Werden bei Wasserzählern DN 80 Flansche mit 4 Löchern benötigt, bitten wir, dies in der Bestellung anzugeben.