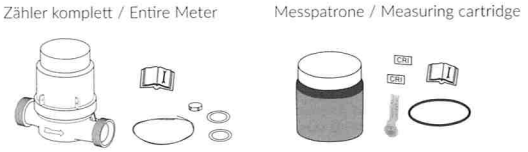
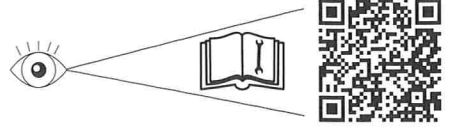


Lieferumfang / Scope of delivery



Weitere Informationen / Further information



Transport / Conditions of transport



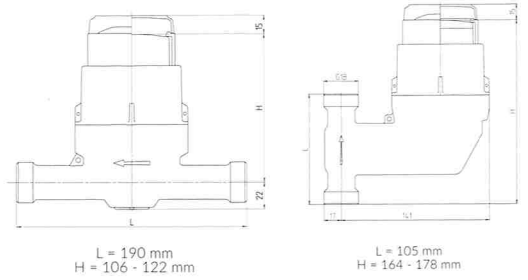
Lager- und Umgebungsbedingungen / Storage and environmental conditions



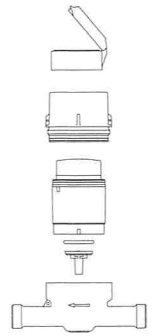
Reinigung / Cleaning



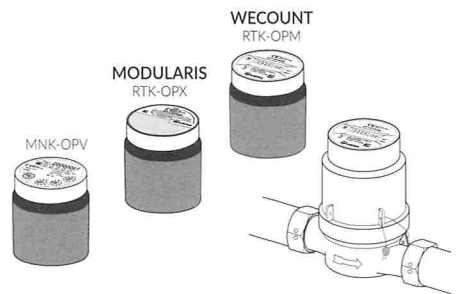
Geräteabmessung / Device dimensions



Geräteaufbau / Device design



E. Wehrle GmbH
 Obertalstraße 8
 78120 Furtwangen
 Germany
 info@wehrle.de
 www.wehrle.de

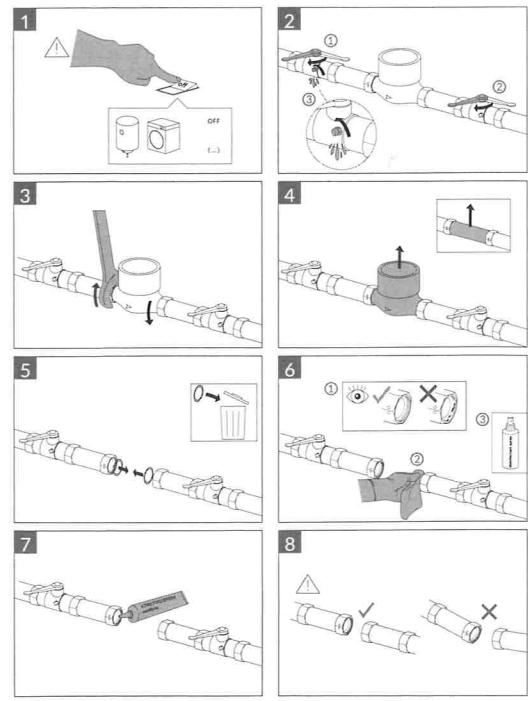


DE Kurzanleitung Installation
 Ringkolben-Patronenzähler **WECOUNT**
 Ringkolben-Patronenzähler **MODULARIS**
 Mehrstrahl-Nassläufer Patronenzähler

EN Quick guide for installation
 Piston Meter Cartridge Version **WECOUNT**
 Piston Meter Cartridge Version **MODULARIS**
 Multi-Jet Wet Meter Cartridge Version

Kurzanleitung Patronenzähler 81.0678.00.00 [01] 2020-12-16

Wasserschalter einbauen / Installing the water meter



Messpatrone einbauen / Installing the measuring cartridge

